



ASSET VERIFICATION PROJECT

Case Study: Fixed Asset – Supermarket Chain

A leading nationwide supermarket chain required the support of RGIS in one specific regional location to complete an **asset verification project**

ASSET VERIFICATION PROJECT

Case Study: Fixed Asset – Supermarket Chain

A leading nationwide supermarket chain, required the support of RGIS in one specific regional location to complete an asset verification project. Movement of assets between stores had not been recorded correctly so had lost track of which stores had which assets.

REQUIREMENT

The supermarket chain required a complete asset verification service to check which stores had which assets, so underused assets could be moved rather than reordered needlessly at an additional expense. They needed the following:

- Assets to be checked at three of their stores
- Record the location of the assets
- Update existing asset register
- Add new assets to asset register

SOLUTION

RGIS sent an experienced team to check the three requested supermarket stores to check their assets. We were able to:

- Provide a **dedicated team** of three auditors to attend all three stores
- **Verify existing assets**
- **Checked locations** were correct on the asset register
- **Tagged** new assets
- **Added new assets** to asset register

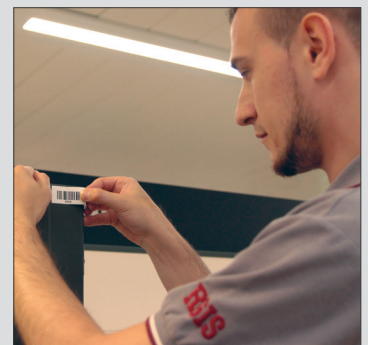
RESULTS

By partnering with RGIS, the supermarket found the following:

- Old assets had not been removed from the asset register
- New assets had not been added to the asset register
- Assets they were unaware they had, which they could **utilise** in other stores
- **Saved money** by not over-ordering assets



The impact of the work that RGIS completed for the nationwide supermarket chain meant they could **utilise existing assets** at other stores rather than ordering duplicate assets they did not need



© 2019 RGIS. All rights reserved. RGIS_CS_0003_01

Dedicated Team



Information Gathering



Reduced Costs



Utilised Existing Assets



CONTACT **RGIS** TODAY TO SEE HOW WE CAN HELP YOU

 salesUK@rgis.com

 +44 (0)1926 888 882

 www.rgis.co.uk

RGIS