



DISTRIBUTION CENTRE DELIVERY CHECKS

Case Study: Supply Chain – Supermarket Chain

A supermarket chain needed a solution to **highlight differences between stock received and stock booked** at a distribution centre

DISTRIBUTION CENTRE DELIVERY CHECKS

Case Study: Supply Chain – Supermarket Chain

One of the world's largest food retailers employing over 500,000 people and serving millions of customers every week in Asia and Europe, including Great Britain and Northern Ireland required the support of RGIS. The supermarket chain is the largest food retailer in Ireland, with a proud record of investment and job creation, and employ 9,000 colleagues across over 170 stores.

REQUIREMENT

The supermarket chain needed a solution to **highlight differences between stock received and stock booked** at a distribution centre (DC).

The supermarket chain required RGIS to provide the following:

- **Delivery checks** coming from a particular distribution centre in the UK
- **Reports** to be provided on a USB stick
- Data to highlight **differences between stock received and stock booked**
- **Increase accuracy of deliveries**

SOLUTION

The supermarket chain partnered with RGIS to complete the **delivery check from a specific distribution centre project**, and RGIS provided:

- **Pre-inventory calls** to discuss the following:
 - Any items excluded from the count
 - The internal staffing plans for the count
 - 'Sin Bin' process for items with no barcode
 - Agree the commencement time
 - Accuracy checks to be completed
- A team of **15 experienced RGIS auditors** scheduled over two weeks (three days per week) to count specific deliveries
- RGIS provided a USB stick with the count information on; **area number, delivery number, barcode, TPNB and quantity**

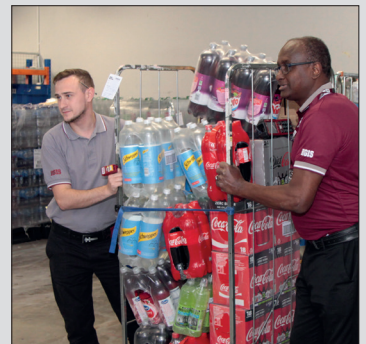
RESULTS

The supermarket chain found by outsourcing to RGIS the **delivery check from a specific distribution centre project**, the following results were achieved:

- A total of **70 cages were accurately checked**
- The customer compared the results provided by RGIS with the delivery dockets, and was able to **investigate any differences**
- This project had a **positive impact on increasing the accuracy** of deliveries to the supermarket chain



By partnering with RGIS, the supermarket chain was able to compare the accurate results provided by RGIS with the delivery dockets, which had a **positive impact on increasing accuracy of deliveries**



© 2021 RGIS. All rights reserved.
RGIS_CS_0004_01

Delivery Check



Variance Reports



Accurate Data



Increased Accuracy



CONTACT **RGIS** TODAY TO SEE HOW WE CAN HELP YOU

 salesUK@rgis.com

 +44 (0)1926 888 882

 www.rgis.co.uk

RGIS